

# LLL Reporter



Official Publication of the Kansas District LLL

Volume 73

March 2012

Number 1

## Inside this issue

Pg 2- LLL/LHM info; 514  
Pg 3-Financial Aid; Golf; Family Retreat, Fair Booth  
Pg 4-Region/Zone News;  
Pg 5-Members at Home with Jesus; Fishing Tournament  
Pg 6-Ambassador Program  
Pg 7-Golf Tournament Registration, District Project  
Pg 8-Kansas Lutheran Hour Broadcast Guide

## Calendar

5/5—Golf Salina  
7/23-29—International Saskatoon  
8/3-5—LLL/LWML Retreat  
8/4—BOG Camp Webster  
11/2-4—LLL/LHM Convention Salina

## President's Message John Johnson

Kansas LLL, What's in it for me? I would like to think many things: Bible Study, "Bringing Christ to the Nations and the Nations to the Church", sharing Jesus training, Go...teach....Baptize....., expressing your joy as a redeemed child of God. All these things your partnership with LLL/LHM is accomplishing through joining with your brothers and sisters in Christ. **He** multiplies **His** power within this group called LLL/LHM. You will find many opportunities to share your faith and live out your faith. We do things for Jesus to express our joy for what **He** has done for us. Sharing that joy identifies us as **His** child, members of the community of God's people, and ultimately **His** Kingdom. At some point we realize that our receiving is less important than our giving and participating. Does that define us as a Disciple?

God's Blessings! John



## Mission U

"How to" training for your church, Zone, Region, or the Kansas District, Webinar monthly topics, Web office follow-up to training discussions. Would your Evangelism/Outreach Committee, Elders, Sunday School class, Pastor's conference, or LLL Club like to know more about:

**Building the Church by Building the Kingdom** *Rev. Dave Haberer*

**Rural and Small Town Outreach** *Rev. Dr. Lee Hagan*

**A Mission Trip to Our Own Neighborhood** *Greg Finke*

**Church as the Community Center** *Rev. Dave Haberer*

**Mighty Warriors: Seeking & Saving the Lost** *Dr. Micah Parker*

**Connect with Young Adults** *Jessica Bordeleau*

**Activating Men for Spiritual Leadership** *Rich Cohrs, Lutheran Hour Ministries*

**Christianity is Life! Reclaiming Vocation** *Professor Cook, Concordia Seminary*

**Generously Sowing Seeds of Hope** *Tina Jaison, DCO Southeastern District*

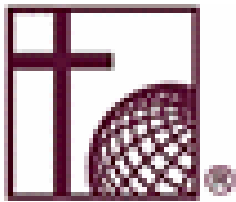
**Bridging the Gap with the Entertainment Industry**

If you are reading this electronically on your computer, hooked to the internet, point your mouse at one of the topics listed above and click to go directly to the webinar or at this website <http://www.whatsmissionu.com/speakerseries.asp> then scroll to the bottom of the page and join one of these archived webinars by clicking on it they are each about 1 hour. Try it, if you can't watch it all click on the X in the top right corner you can always go back to it later!

In "Connect with Young Adults" there is a very startling statistic, among young adults (between college age & 35) 10% are committed to their faith but, not necessarily Christian, 10% are Anti-Christian, and 80% don't care one way or the other (indifferent). More "Young Adult" information at: <http://www.lcmsyam.org/> How can this have happened in a previously largely Christian nation?

In the book Bonhoeffer by Eric Metaxas, Bonhoeffer, while a visiting scholar at Union Theological Seminary, in 1930-31 said "There is no theology here." Later he declared that the Gospel wasn't preached in America, until he discovered a black church in Harlem whose Pastor was Adam Clayton Powell Sr. Perhaps our troubles aren't new.

Two themes appear commonly in the webinars, **one** a personal relationship with an individual is necessary to begin the process of their becoming a church member (disciple of Christ), and **two** discipleship is more important than evangelism in strengthening the church. Disciples of Christ become committed church members.



## Lutheran Hour Ministries

### Our Mission

**“Bringing Christ to the Nations—and  
the Nations to the Church”**

### Our Vision Statement

**“All nations. All peoples. All in Christ”**

### Our Identity

**“People of Christ with the Message of Hope”**

**LHM Home page [www.lhm.org/](http://www.lhm.org/)**

**Lutheran Hour (see page 8)**

Radio AM, FM, XM-Satellite #170

Podcasting

Listen on Computer

<http://www.lutheranhour.org/>

Armed Forces Network

### Resources for You

<http://www.lhm.org/resyou/default.htm>

Daily Devotions

<http://www.lhm.org/dailydevotions.asp>

Help Topics and Booklets

Men’s Network [www.lhmmen.com/](http://www.lhmmen.com/)

Bible Studies

[www.JCPlayZone.com/](http://www.JCPlayZone.com/)

[www.JCParentZone.com/](http://www.JCParentZone.com/)

Order supplies online or 1-800 876-9880

### Resources for Your Church

<http://www.lhm.org/reschurch/default.htm>

Men’s Network [www.lhmmen.com/](http://www.lhmmen.com/)

Mission U [www.whatsmissionu.com/](http://www.whatsmissionu.com/)

Group Bible Studies Current & Archived

<http://www.lhm.org/reschurch/groupstudies.htm>

Outreach-Developmental Training & Resources

Project Connect

<http://www.lhm.org/projectconnect/default.htm>

Bulletin Inserts

### Volunteer Opportunities

International Trips

<http://www.lhm.org/teams/projects.asp>

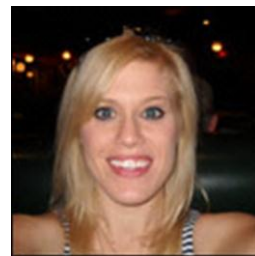
Teens [www.whatsfive14.com/](http://www.whatsfive14.com/)

Mission U [www.whatsmissionu.com/](http://www.whatsmissionu.com/)

For more Kansas LLL News and Events

<http://www.lhm-ks.org/>

Tip: To follow an underlined link in this  
Newsletter POINT and left CLICK



514 Teen Peer Ministry

Sarah Guldalian “The Team”

## The Right to be Heard

**TEXT:** Acts 2:47a - ... praising God and having favor with all the people.

Meredith was a non-Christian classmate who was beginning to hang out with some of us church kids. She was witty and sophisticated. One Monday during lunch, she declared to our table, "I've had such a crummy day. The gods must be angry with me." Seeing this as a chance to witness, my good friend Jay proceeded to launch into a sermon.

If he would have known her better, he might have changed his approach. Unfortunately, he offered a one-size-fits-all message. He proceeded to expound on Adam and Eve, the serpent, the flood, Levitical law, judges, kings and the prophets. Getting to the exile, Meredith started laughing at him. "Are you trying to convert me?" She dismissed Jay before he even got to the Name of Jesus.

I have a missionary friend who works with this motto when it comes to evangelism: "Earn the right to be heard." How well do you listen to strangers? Do you listen at all when it's someone you don't respect?

We listen best to people we trust. Early believers in Jesus modeled such trust and gained "favor with all the people." There was something in their way of life and how they treated outsiders that gained the trust of the people.

"Earn the right to be heard" means investing in relationships. It means truly loving the non-Christian. It means meeting them on their turf and their terms. It means listening before you speak. It means sometimes you need to be silent for the best exchange to take place. And if a person ever asks you, "What do you think?" well, then you're in a good position. You know you've listened enough and earned the right to speak of deeper things. Now you've got an opening "a natural bridge into a conversation about salvation". Now you can tell them about the man from Nazareth whose death and resurrection have turned your world upside down.

**THE PRAYER:** Dearest Lord Jesus, I want to tell others about You but I often rush the conversation. Teach me to be patient—even as You have been patient with me—when sharing the greatest news this world has ever heard: salvation is possible through Jesus Christ. In Your Name. Amen.

*Biography of Author:* Jeff Cloeter is a pastor at Christ Memorial Lutheran Church in St. Louis, where he leads its city mission called Reliant, and writes for [sixthgen.com](http://sixthgen.com).

## Appreciative Financial Aid Recipients

Responses from some of the seventeen students who shared in \$26,000 financial aid this school year.

I would like to thank you and your ministry for your generous scholarship monies given to me. I appreciate your investment in my future career. It is scholarships like yours that have made it possible for me to attend a university where I can earn a degree that allows me to serve God by working in the Church.

-Beth Stephens

I gratefully accept this gift as it will help in my schooling and education. I am very excited to see how God uses me.

-Alyssa Burdett

Thank you very much for awarding me financial aid. This will help me pursue my degree in education. I look forward to obtaining my degree and serving the Lord.

-Rachel Dalke

I would like to thank you for your continued support of my goal to be an elementary teacher in our Lutheran schools. This money will have a multiplying impact as hundreds of individuals will hear the Gospel through the ministry in my classroom.

-Samuel Fishburn

It is because of the thoughts, prayers and financial aid from amazing groups such as the LLL, that I am able to go to Concordia Nebraska, a school that I absolutely love.

-Emily Beach

Thank you for financial assistance... as I learn more about the Word of God and how to serve our neighbor with the mercy He has shown us.

-Christine Schotte

## The 2012 LLL/LWML Family Retreat

*Lutheran Family Retreat* is August 3-5, 2012, at Camp Webster, just off I-70 near Salina, Kansas. The facility provides air-conditioned housing and dining, plus lots of scenic outdoor areas and activities for all members of the family. Come and join other Christian families for a weekend of relaxation, worship and lots and lots of fun and good food! Retreat fees are \$80.00/person age 4 and older - with children 3 and under \$15.00. A deposit of \$15 is required for each person age 4 and older by July 16, 2012.

You can register on-line and get more information at [www.lutheranfamilyretreat.org](http://www.lutheranfamilyretreat.org) or pick-up a brochure from your LLL or LWML representative. A registration form is available in the brochure and online. For more information on the camp, go to [www.webstercc.org](http://www.webstercc.org) or contact Carroll and Barb Hackbart at (785) 494-2425,

[cbhack@yahoo.com](mailto:cbhack@yahoo.com); or Ivan and Barb Grimm at (913) 685-8360, [bgrimm@everestkc.net](mailto:bgrimm@everestkc.net) for registration help or information.

## The Baloney Shop

Featuring three seasons, Rev. Ken Klaus "King of Cutlet's" Baloney Shop, can be yours with these short video Vignettes, on DVD. For fresh and archived subjects, go to [www.lhmmen.com](http://www.lhmmen.com)



Sign up to witness to fair attendee's at the KS Fair September 7-16 with Mike Tonn (620) 465-3435

## LLL Fair Booth 2012

The 2012 Kansas State Fair will take place from September 7th to the 16th. This will mark the 27th year that the Kansas Lutheran Laymen's League will have a booth at The Fair. Our location remains the same in the southwest corner of the Meadowlark Building. Volunteers at the 2011 Fair booth represented a dozen congregations across the Kansas District. Portals of Prayer and Sunday School material was donated from many congregations and was available to the many Fair participants. The Fair booth committee thanks everyone for volunteering time and material that helps in our ministry of "Bringing Christ to the Nations and the Nations to the Church". Please contact Mike Tonn at [620-465-3435](tel:620-465-3435) (home) or [620-665-3382](tel:620-665-3382) (work) if you are interested in helping at the booth. Blessings!

**40<sup>th</sup> Annual Kansas District LLL Golf Tournament** will be held at the Salina Municipal Golf Course, 2500 E. Crawford, Salina, Ks 67401. The date is Saturday May 5—tee off at 9 am—shot-gun start, best ball scramble format. Tournament fee will be \$50.00/player (greens fees, golf car rental & lunch) Entries will close Thursday April 26, 2012. (See page 7)

Send to: Mr. Gary Neuschafer  
212 W Normal Dr  
Lindsborg, Kansas 67456  
(785) 212-6020

Mulligan purchases available.

## Region/Zone News

**Region 1 Zone 3—Shawnee, Hope** “Christ Alone in a Co-Exist World,” one of six courses in the Lutheran Hour Ministries Mission U curriculum, was presented at Hope Lutheran Church and School in Shawnee, Kansas, on Saturday, February 11<sup>th</sup>. Mr. Rich Cohrs of the Lutheran Hour Ministries was the presenter and some 45 people representing four different congregations in the area were in attendance. The focus of Mission U 301, “Christ Alone in a Coexist World” is to assist course participants in examining the culture that defines present-day America, as well as identifying prevalent religious views present in the U.S. and become educated about them. The course also instructs participants on points of connection and applying unique conversation paths towards sharing the Gospel with relevance to people of today's culture.

Hope Lutheran had previously hosted the Mission U 101, “Equipping to Share” course for area congregations on two occasions. According to Al Gehrt, Evangelism Board Chair at Hope, “The Lutheran Hour Ministries Mission U program is nothing but outstanding! Course materials are relevant and professionally developed, and the presenters are first rate. We have found them to be highly skilled in their presentation skills, familiar with course subject matter, and able to relate personal experiences to their audience. I would recommend that every congregation incorporate Mission U resources into their outreach program.”

Refreshments and lunch provided by the Hope Lutheran Evangelism Board facilitated sidebar discussions with each other and Rich, as well as providing an opportunity for Christian fellowship.

**Region 3 Zone 8—Wheaton, St. Luke** will host the Zone 8 spring rally on May 7 at 3 p.m. Ken McCosh will present valuable information about exciting programs at LHM. A fund raiser for the District Project will be a soup and dessert cook-off. The winners are determined by “a money vote”. Stuffing of the ballot box with \$20 bills is encouraged.

**McFarland, Trinity** LLL Fellowship of McFarland was blessed with great weather and a great turnout for their annual pancake-sausage supper on February 19. After serving two hours, our supplies were gone and we were happy to have donations exceed our expectations. \$1000 was sent for the Kansas District LLL Project, thanks to the many volunteer helpers in our congregation in addition to the Fellowship Club members. It was a great and rewarding evening.

**Manhattan, St. Luke's** The LLL Fellowship club held its annual pancake supper fund raiser February 12, 2012. Many of the supplies were donated by local merchants and LLL members. Thanks to great attendance and the volunteers who worked \$1000 was sent for the District project. Liz Beikmann St. Luke's LLL Fellowship Club - Secretary

**Junction City, Immanuel** Our Lutheran Laymen League Club held its annual chili, vegetable , and potato soup lunch on Saturday January 29 and served approximately 200 people, with a free will offering raising around \$800 for the District LLL project. It was a good time for friends and neighbors to get together and visit. Immanuel group is very small but it was a rewarding day for our efforts.

We also support the Orphan Grain Train with financial support as well as clothing and other items. Our group furnishes Lenten Devotional books for all members and guests wanting them. Bill Strauss President.

**Zone 12—Haven, St. Paul's** LLL Men's Fellowship of Haven held a benefit for Rev. Jeff Geske. He and his wife were returning home from Kansas City in February when just west of Topeka on I-70 a car going in the opposite direction crossed the divided highway and crashed into the Geske car killing Laura Geske and 2 of their 3 children. Rev. Geske and their youngest son survived the accident. On March 11, St. Paul's Men along with the youth of the congregation served an evening meal to over 150 people. The menu included grilled hamburgers and hotdogs, baked beans, potato salad, fruit and desserts at the church's Light House. A free-will offering for Rev. Geske was received and the total given was over \$5200. After expenses were taken off and Thrivent Financial matching funds added, Rev. Geske will receive in excess of \$6600.

Rev. Geske recently moved back to Kansas from Amarillo to serve Christ the King Lutheran Church in Salina. Prior to Texas he served here in Kansas, at Trinity, McFarland. He and Laura were great supporters of the LLL including serving as volunteers at the Lutheran Hour Ministries booth at the Kansas State Fair. Rev. Geske along with his youngest son attended the benefit and was very appreciative of all the support he has received from his brothers and sisters in Christ.

**Region 4 Zone 13—Ellsworth Immanuel** Lutheran had a fund raising Mexican feed after church in March for the Kansas District project, 76 people attended. The Zone 13 rally was held on April 3 at Peace Natoma, this was in conjunction with the LWML and the speakers were the members of zone 13 who have done missionary work overseas. Bethlehem Sylvan Grove had a ground hog feed to support the District Project in February.

**Region 5 Zone 14—Preston St. Paul** The LLL Men's Club of Preston started Pancake and Sausage Suppers in 1955. This year the event was held the 3rd Saturday of January, also serving eggs, waffles, french toast, coffee, tea, orange juice and milk. A free will offering was for local projects and fulltime church worker financial aid.

The club's other activities; Valentine Party for our women, annual pick up litter, both sides of the road, for one mile from St. Paul Church along Hwy 261, and Bible Study. Meetings are the 1st Thursday, at 7:30 p.m., September thru May with a breakfast meeting in June.

Submitted by; Al Herren - Secretary



## Members at Home with Jesus

**Hays**—Jerry LeRoy Kaempfe, 77, died Saturday, Sept. 17, 2011, at his home. He was born Dec. 1, 1933, in Sylvan Grove to Albert and Clara (Seehafer) Kaempfe. He graduated from Sylvan Grove High School and received a bachelor's degree from FHS, now Fort Hays State University, in 1956.

He married Viola Vincent on Aug. 30, 1959. He covered all of western Kansas for AAL until 1989, at which time he became an independent agent. He was an insurance arbitrator for the state of Kansas. He also was a U.S. Army veteran, serving two years.

He was a member of the Sig Tau Fraternity while attending Fort Hays. He was a member of Chartered Life Underwriters since 1975, Messiah Lutheran Church, Northwest Kansas Life Underwriters, Lion's Club, Gideons, Thrivent, Lutheran Layman's League, American Red Cross, Meals on Wheels and numerous other civic organizations. He held a number of officer positions with those groups.

Survivors include his wife; a son, Victor Kaempfe (Tracy); a daughter, Tina Anguish (Al); a brother, William Kaempfe; two sisters, Bonnie Gabel and Mary Alire; a grandson, Richard; and numerous nieces and nephews.

Services were at 2 p.m. Thursday at Messiah Lutheran Church, 20th and Main, Hays; burial in Mount Allen Cemetery, with military honors by Hays American Legion.



**Alma**—Delmar George Maike, 89, died Saturday, December 3, 2011, at the Midland Hospice House in Topeka. He was a life-long resident of the community. Delmar was born on the family farm south of Alma, on April 17, 1922, the son of William and Oillie Bock Maike. He attended country school and St. John Lutheran School. He graduated from Alma High School in 1940. Delmar was a dairy farmer. He worked on the family farm in partnership with his father until 1960. After selling the cows, Delmar worked at Haefke Lumber Yard, in 1979 he became the Wabaunsee County Weed Supervisor and later that same year, became the Pottawatomie County Weed Supervisor where he worked until his retirement in 1989.

Delmar married Nyla June Stuewe on September 9, 1945, in Alma. She preceded him in death on October 29, 2004. Delmar and Nyla enjoyed traveling in the United States, especially going on bus trips with friends they had met through the years. Delmar was a devoted husband and spent lots of time at the Council Grove Care Home visiting with his wife until her death. Delmar helped organize Happy Valley 4-H Club and was a project and community leader. He served on the St. John Lutheran School board and the Finance and Trustee Boards of St. John Lutheran Church. He also served as an usher. Delmar loved spending time with his family. He really enjoyed attending his great-grandchildren's activities, especially their ball games during the summer.

Delmar is survived by his two sons, Alan Maike and his wife, Dorothy, Kansas City, Missouri and Ronald Maike and his wife, Linda, Alma; his daughter, Lynette Phillips and her husband, Mike, Topeka; four grandchildren; four great-grandchildren; one sister, Dolores TenEyck and her husband, Harry and his friend, Mary Moege. He was preceded in death by his granddaughter, Caryn Dawn Theel. Funeral services were held at 11:00 a.m., Thursday, December 8, 2011 at St. John Lutheran Church in Alma with Reverend Robert Grimm officiating. Burial followed at St. John Lutheran Cemetery

**Overland Park**—James Harold Mayes Sr., 94, passed away on December 7, 2011. He was born April 3, 1917, in Pittsburg, Kan., and had lived in the

Kansas City area since 1950. He was employed on the audit staff of the Greyhound Corporation at the time of his retirement in 1982. He served in the Navy during WWII and was very active in the Lutheran Layman's League. Jim was preceded in death by his wife of 60 years, Nola Mundt Mayes in 1999. He was also preceded in death by his parents, Iver Earl and Grace Mayes. He is survived by his children, Dr. Sharon Bagg, Rev. James Mayes Jr. (Becky) and Rev. Theodore Mayes (Joline); 11 grandchildren and 10 great grandchildren. Funeral services were at 10 a.m. Monday, Dec. 12, at Bethany Lutheran Church, Overland Park, visitation preceded at 9 a.m. Burial followed at Johnson County Memorial Gardens, Overland Park. Memorials were to The Bethany Foundation or Lutheran Hour Ministries.

**Manhattan**—Alvin K. Wiens, age 89, a longtime resident of Pratt, died Oct. 11, 2011, at Stoneybrook Retirement Community in Manhattan.

He was born Feb. 5, 1922, in Montezuma, the son of Jacob and Carrie (Koehn) Wiens. He graduated from Copeland High School as the valedictorian.

He was married to Ruth Anna Martha Nusser at the Trinity Lutheran Church in Garden City, Kansas, on June 1, 1945. Mrs. Wiens survives of Manhattan.

He was a very active member of Our Savior's Lutheran Church in Pratt, and had served in a variety of ways, including several terms as congregation president. He was also a member of the Lutheran Laymen's League and the Booster Club of Pratt Community College. His priorities in life were family, church and work.

Additional survivors include two sons, Rev. Keith Wiens (Carol) Manhattan, and Myron Wiens (Sharon) Fort Worth, Texas; five siblings, Edward Wiens, Pampa, Texas; Suzanna Unruh, Irene Koehn, Alma Wiens and Velma Wiens all of Montezuma; six grandchildren; and three great-grandchildren.

Alvin was preceded in death by one daughter, Karen Elaine Wiens in infancy, by a brother, Henry Wiens, a sister, Clara Wiens, and three siblings who died in infancy.

Funeral services were held at 11 a.m. Monday at the First Lutheran Church in Manhattan with the Rev. Russell Glaser officiating. Graveside services were held at 11:30 a.m. Tuesday at the Greenlawn Cemetery in Pratt.

**Men's Network Fishing Tournament**, 4th annual, registration begins April 2nd with the tournament concluding September 2nd, 125 days of fishing thrills! Weekly prizes and a grand prize of \$500 Details at [www.lhmmen.com](http://www.lhmmen.com).

## Team Building and March Madness

Many of us will be watching the many college basketball games these next few weeks, hoping our favorite team(s) will be successful. Much effort and time is expended in recruiting, training and encouraging a team to reach its highest potential and striving to make it a championship team.


The Kansas District LLL is also team building. The LLL Ambassador program is currently under revision and will use the team approach. Elmer Kellner is the District Ambassador Coordinator and will concentrate in Regions 4 & 5; his assistant Ken McCosh will work with Regions 1, 2, & 3. The Regional Ambassadors are Region 1 Mr. Ivan Grimm, Region 2 Mr. Don Copley, Region 3 Mr. Ron Bott, Region 4 Mr. Chris Erichsen, and Region 5 Mr. Arlen Schultz. We are now working on filling Zone Ambassador positions in each of the sixteen zones and Congregational Ambassador Teams in each congregation. In our congregations, LLL ambassador teams are also needed to help "Bring Christ to the Nations and the Nations to the Church" at the "grassroots level" and together reach out with the Good News to the ends of the earth. Each of us has a part to play on our local LLL Team. Together we can choose one of our "most committed" LLL members to be the Ambassador and the rest of us can support that person by becoming an "Associate Ambassador" to assist that person as we serve as "little Christ's" in our community and do what we can to share the Gospel everywhere.

To enroll as an Ambassador, one needs to have access to a computer. If you don't have a computer, work with your church secretary, a young person, or a close friend that does have one, so that they can print out information provided by LHM and get it to you in a timely manner. With a computer, much needed information can be presented to us at very low cost-thus allowing LHM to keep us informed quickly and have huge savings in getting needed information to us compared to other methods.

Here is the enrollment procedure: Go to [www.lhm.org/ambassador](http://www.lhm.org/ambassador). This will bring you to the main Ambassador website. Under the brief overview of what an Ambassador does, there are two links. One will take you to the "Ambassador VOLUNTEER DESCRIPTION". Please read it carefully so you are aware of the opportunities and challenges you

may face in this role! At the end of the Job Description is a red box with the words, "Sign me up to be an LHM Ambassador". There is also a link on the main Ambassador page that will take you directly to the online registration page. Complete the blank spaces with your information, key in the code, and "click" on "send"! You will receive a "Thank You" e-mail from Beth Berner, LHM Ambassador Specialist, within 1-2 days.

Again, have that person who you want to be your Ambassador sign up first. Then get the remainder of your Ambassador team to follow the same procedure. For those who will be the "Associate Ambassadors", please make a note in one of the sections of the registration form that you are the Associate Ambassador. Let's build a team in each of our congregations, so we, together, can bring Christ to our community...and reach far beyond. As you build your team members various skills are important: leadership/administration, making presentations, contacting individual families, print materials, and computer skills, email, internet, and presentations. Co-Ambassadors, Ken McCosh and Elmer Kellner stand ready to assist you. Please phone Elmer: (785) 332-2950 Cell: (785) 332-5226...[eldoro1@juno.com](mailto:eldoro1@juno.com). Ken: (785) 539-8064...[kmccosh1@cox.net](mailto:kmccosh1@cox.net). If you know the Regional Ambassadors you may contact them also.

<p>Kansas District</p> <p>LLL</p> 	<p><b>LLL ENDOWMENT FUND</b></p> <p>Charitable Gifts of any kind accepted Managed for uses - you designate</p> <p>For assistance: (785) 537-9306</p> <p>Checks, payable to: Endowment Fund</p> <p>Mail to: 1529 Westwind Dr Manhattan, Ks. 66503</p> <p>Your Gift--that keeps on Giving!</p>
--	--



Elmer Kellner District Ambassador	Ken McCosh Assistant	Ivan Grimm Region 1	Don Copley Region 2	Ron Bott Region 3	Chris Ericksen Region 4	Arlen Schultz Region 5
The Core Ambassador Team						

# Kansas District LLL Golf Tournament—Salina

**May 5, 2012 Tee Off Time 9:00 a.m.**

The Tournament will be a Best Ball Scramble with a Shotgun start. The Tournament is open to all LLL members, Ladies and Men. Individual entrants will be arranged into teams. The Entry Fee, including green fees, car rental, & lunch is **\$50.00** per golfer, entries close Thursday April 26, 2012. Make checks payable to Kansas District LLL Golf Tournament. Prizes will be awarded, and after expenses, all proceeds will go to The Kansas District LLL Project. Send Fees and completed entry form to: Gary Neuschafer Food and beverages are available at the Clubhouse.

212 W. Normal Dr.  
Lindsborg, Kansas 67456  
(785) 212-6020

Name \_\_\_\_\_

Name \_\_\_\_\_

Address \_\_\_\_\_

Address \_\_\_\_\_

City \_\_\_\_\_ Zip \_\_\_\_\_

City \_\_\_\_\_ Zip \_\_\_\_\_

Name \_\_\_\_\_

Name \_\_\_\_\_

Address \_\_\_\_\_

Address \_\_\_\_\_

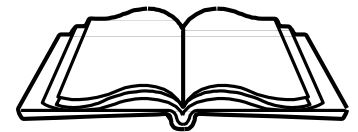
City \_\_\_\_\_ Zip \_\_\_\_\_

City \_\_\_\_\_ Zip \_\_\_\_\_

-----  
**Receipts to date are: \$11,405. Churches that don't have LLL Clubs should consider perhaps including support for the District Project in their budget, and/or encouraging individuals to provide support, especially if the congregation has financial aid recipients.**



**Kansas District Lutheran Laymen's League  
2011-2012 District Project "Spirit Driven"  
Lutheran Hour Ministries**



<b>1. Financial Aid for Kansas District students attending a LCMS synodical school or seminary preparing for full-time church work during the 2012-2013 school year.</b>	<b>\$26,000</b>
<b>2. Recognition Dinner for 4th year students at Concordia Seminary, St. Louis (Region 9 Project)</b>	<b>1,000</b>
<b>3. Bible Correspondence Courses and Argentina Ministry Center (Region 9 Project)</b>	<b>8,500</b>
<b>4. The Lutheran Hour Float in the Tournament of Roses Parade</b>	<b>500</b>
<b>5. Family Retreat</b>	<b>500</b>
<b>6. Orphan Grain Train</b>	<b>500</b>
	<b>Total \$37,000</b>

**I wish to contribute to the Kansas District Project with a gift of \$ \_\_\_\_\_**

**Name \_\_\_\_\_**

**Address \_\_\_\_\_ Church/Zone# \_\_\_\_\_**

**Make checks payable to Kansas District LLL Project, Note District Project and Zone #**

**Mail to: Carroll Hackbart  
3640 Flush Rd.  
St. George, Ks 66535  
(785) 494-2425**

# The Lutheran Hour® radio broadcast schedule

Station	City	Frequency	Time	Station	City	Frequency	Time
KJRL	Abilene	105.7 FM	10:30 a.m. Sun	KNGL	McPherson	1540 AM	9:00 a.m. Sun
KSOK	Arkansas City	1280 AM	8 a.m. Sun	KFAB	Mission	710 AM	8 a.m. Sun
KSOK	Arkansas City	95.9 FM	8 a.m. Sun	KCMO	Omaha	1110 AM	6:30 a.m. Sun
KKOY	Chanute	1460 AM	11:05 a.m. Sun	KAWZ	Parsons	89.5 FM	9 a.m. Sun
KCLY	Clay Center	100.9 FM	7:30 a.m. Sun	KKAN	Phillipsburg	1490 AM	11:30 a.m. Sun
KGGF	Coffeyville	690 AM	7 a.m. Sun	KQMA	Phillipsburg	92.5 FM	11:30 a.m. Sun
KJRL	Concordia	97.7 FM	10:30 a.m. Sun	KKOW	Pittsburg	860 AM	9:30 a.m. Sun
KGNO	Dodge City	1370 AM	8 a.m. Sun	KMMM	Pratt	1290 AM	8:30 a.m. Sun
KANS	Emporia	96.1 FM	10 a.m. Sun	KJRL	Salina	96.5 FM	10:30 a.m. Sun
K207E1	Emporia	89.3 FM	9 a.m. Sun	KJRL	Scandia	106.5FM	10:30 a.m. Sun
KREJ	Great Bend	88.1 FM	6 p.m. Sun	K208FE	Topeka	89.5FM	9:00 a.m. Sun
KHAZ	Hays	99.5 FM	7:30 a.m. Sun	WIBW	Topeka	580 AM	7:30 a.m. Sun
KJRL	Salina	96.5 FM	10:30 a.m. Sun	KULY	Ulysses	1420 AM	9:30 a.m. Sun
KNZA	Hiawatha	103.9 FM	7:30 a.m. Sun	KAWZ	Wichita	1070 AM	8:30 a.m. Sun
KWBW	Hutchinson	1450 AM	8:30 a.m. Sun	KLFO	Wichita	88.7 FM	9 a.m. Sun
K201DL	Hutchinson	88.1 FM	10:30 a.m. Sun	KNGN	McCook, Nb.	1360 AM	7:30 a.m. Sun
KLWN	Lawrence	1320 AM	8:30 a.m. Sun	KNGN	McCook, Nb.	1360 AM	12:30 p.m. Sun
KNDY	Marysville	1570 AM	12:30 p.m. Sun	KNGN	McCook, Nb.	1360 AM	5:00 p.m. Sun
KJRL	McPherson	107.7 FM	10:30 a.m. Sun	XM Radio	Nation wide	#170	12 p.m. Sun

## The LLL Reporter

*Published twice annually March, and August for the Kansas District Lutheran Laymen's League.*

*The LLL Reporter is the official publication of the Kansas District Lutheran Laymen's League & Lutheran Hour Ministries. Deadline for news copy and photographs to be sent to the editors, listed below, is the 15th of the month of publication. To be removed from the mailing list contact the editor. **Permission to reprint is granted.***

**Editor**—Ken McCosh, 2209 Stone Post Rd., Manhattan, Kansas 66502; (785) 539-8064 **E-mail** kmccosh1@cox.net

**Assistant Editor** —John Johnson, 3669 Everett Rd., Manhattan, Kansas 66503; (785) 539-6962 To receive future issues of the Reporter by email in pdf format submit your email address to: johnejohnson4779@sbcglobal.net

*Or current resident*



*Kansas District Int'l Lutheran Laymen's League  
The LLL Reporter  
Ken McCosh—Editor  
2209 Stone Post Rd.  
Manhattan, Kansas 66502*